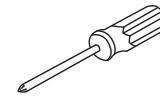
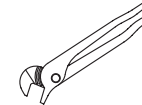


SINGLE LEVER KITCHEN FAUCET

RECOMMENDED TOOLS



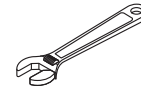
Screwdriver



Channel Locks



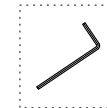
Goggles



Adjustable Wrench



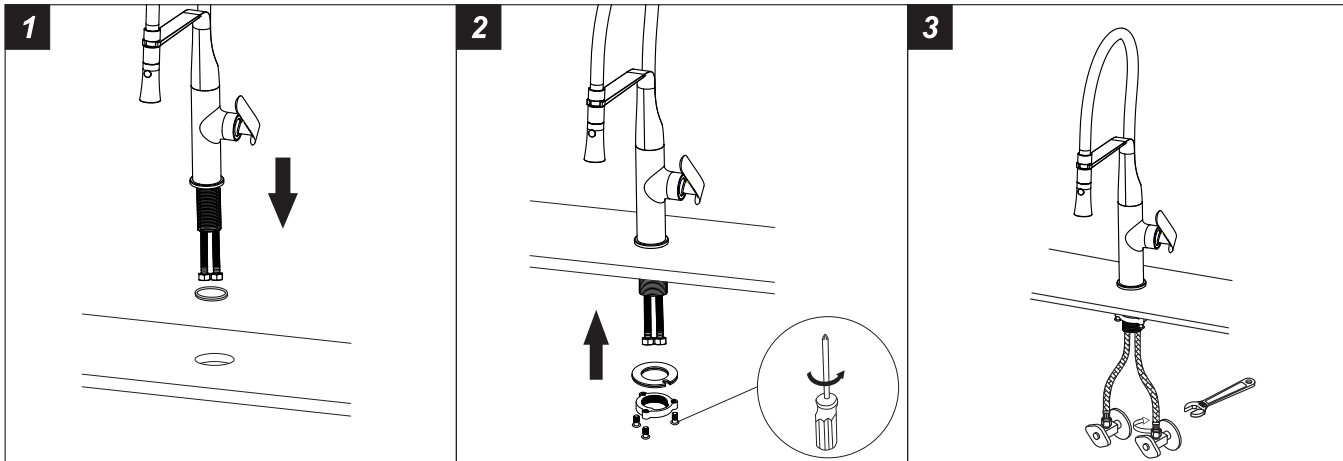
Teflon tape



Allen key

! WARNING:
Please keep the
tool for future
use!

Step 1 Faucet installation

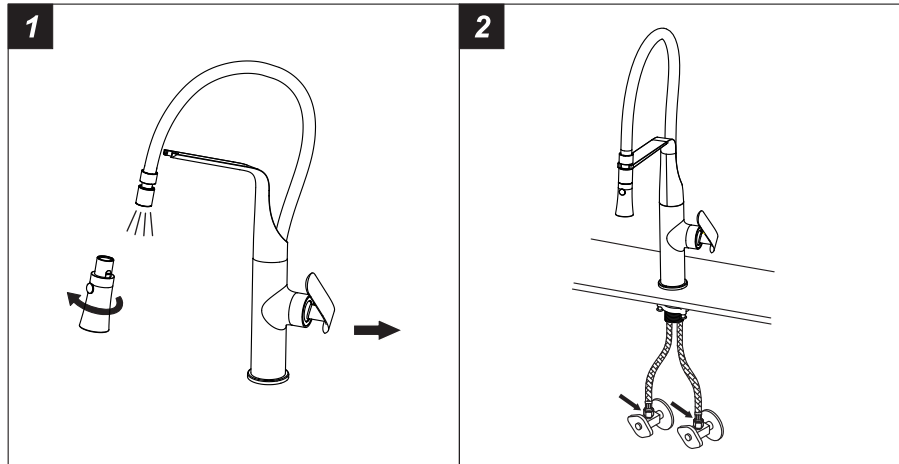


- 1) Position the faucet and o-ring on the installation surface.
- 2) Adjust the position of the faucet and secure it with the mounting kit as pictured.
- 3) Connect the flex hoses to the shut off valves (not included) and copper tubes, tighten with adjustable wrench. Do not overtighten.

! Caution: Make sure to connect the hot and cold flex hoses to hot and cold shut off valves correctly.



Step 2 Checking and testing



- 1) Remove sprayer by hand. Turn on both hot and cold water and to flush water lines for one minute. Reinstall sprayer by hand.
- 2) Check all connections at arrows for leaks, re-tighten if necessary. Do not overtighten.

Care and Maintenance Tips

How to retain luster and shine?

- Wipe your faucet with a damp cloth and mild household cleanser
- Dry with a soft cloth

What cleaning products can cause damage to faucet finishes?

- Industrial cleaners
- Abrasive cleaners
- Toilet bowl cleaners
- Bleach-based cleaners
- Heavy-duty scrub sponges
- Rust removers
- Ammonia solutions